



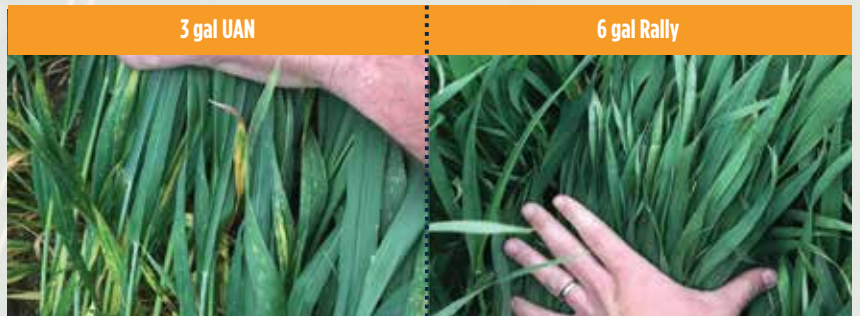
# Accelerate UP the Yield Curve

FOUNDATIONAL FOLIAR NUTRITION BLEND

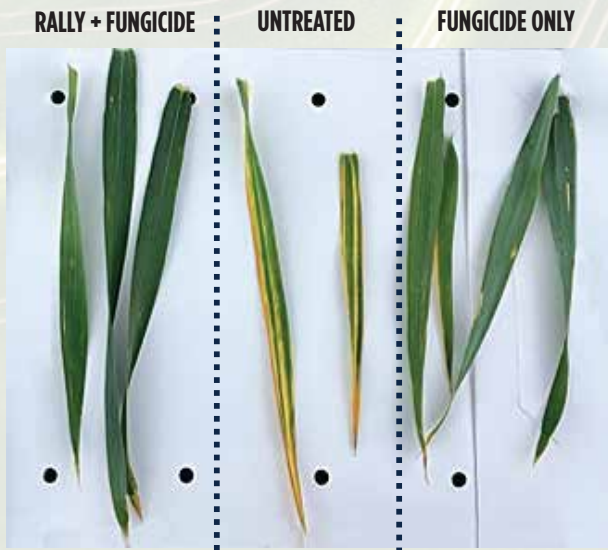
Don't throttle your yield

- A urea-based foliar blend of potassium, magnesium, nitrogen, and chloride designed to feed the crop what it needs, when it needs it - *Feed the Need*.
- Rally™ is a cost-effective and easy-to-handle foliar product that maximizes access to the most commonly yield-limiting nutrients in the PNW, from stem elongation through flag leaf timing.
- Low salt and minimal phytotoxicity compared to UAN makes Rally a safer option for foliar applications - both ground and aerial.
- Feeding the plant from the top down provides optimal nutrient absorption directly into the leaves of the plant during the peak nitrogen demand period, beginning at herbicide timing.

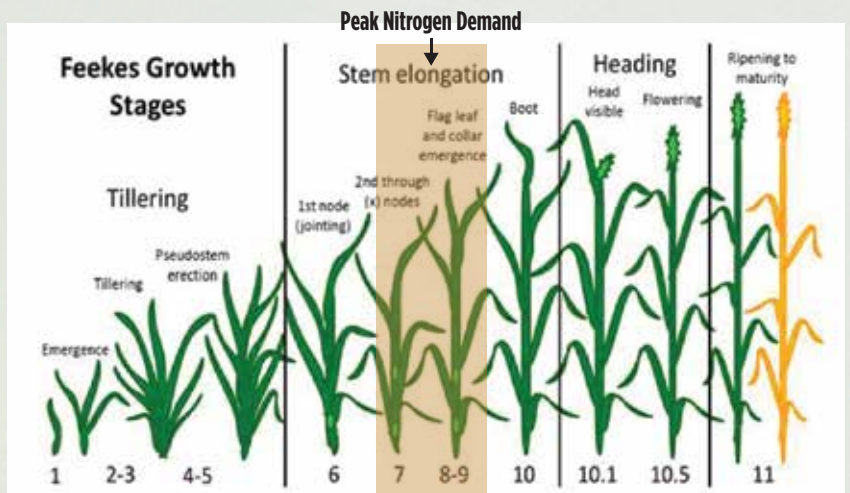
**8-10% increase** in nitrogen utilization using foliar-applied Rally vs. UAN



The liquid urea based formulation of Rally consistently achieves a higher uptake of nitrogen to the plant as compared to UAN applications.



The foliar nutrition package of Rally plus plant health fungicides upregulates photosynthate and nutrient use efficiency.



Rally delivers balanced nutrition at peak nitrogen demand timing.

START. FEED. FINISH



**YIELD 3D™**

Your pathway to optimal farm profitability



# FREQUENTLY ASKED QUESTIONS

## Why use Rally instead of UAN?

Rally is a urea based foliar nitrogen source with potassium, magnesium, and chloride to maximize both crop safety and tank space. The efficiency of foliar feeding, combined with Rally's balanced nutritional blend, provides a unique product that truly feeds the crop *what* it needs, *when* it needs it, and *how* it needs it. Rally addresses multiple yield limiting factors in the same trip across the field, consistently resulting in an improved crop response.

**30% LESS**  
leaf burn potential than UAN

## Is Rally necessary if I applied nitrogen in the fall?

Regional tissue testing shows that fall-applied nutrition often runs short during the peak nutrient demand periods from stem elongation to flag leaf emergence, which typically aligns with herbicide application timing for our region. Rally addresses deficiencies from multiple yield limiting nutrients including nitrogen, potassium, and chloride, which are the most common yield-limiting nutrients found across the PNW from stem elongation through flag leaf timing.

## Why should I foliar feed my crop?

Foliar feeding is one of the most efficient methods of supplying nutrients during critical growth stages and completes the "balanced diet" the crop needs to grow and develop. Proper foliar liquid fertilizers prevent leaf chlorosis and encourage photosynthetic growth by giving the plant what it needs from the top, down.

## Can Rally be mixed with pesticides?

Yes, Rally can be mixed with most pesticides though a jar test is always recommended for new tank mixes. In addition, research by The McGregor Company has thoroughly vetted the performance of Rally paired with all major grassy herbicides. Looking at both crop safety and efficiency, research has proven that foliar nutrition applied in combination with crop protection leads to a surge in the plant's energy production and increased yield.

### Notes

---

---

---

---

---

---

---

---

### GUARANTEED ANALYSIS

Total Nitrogen (N)	11%
Ammoniacal	0.5%
Nitrate	0.5%
Urea	10%
Soluble Potash (K <sub>2</sub> O)	4%
Total Magnesium (Mg)	0.35%
Total Chlorine (Cl)	4%

*Derived from: Urea, Potassium Chloride, Ammonium Chloride, Magnesium Nitrate*

 **RALLY** your crop

Premium Plant Nutrition



[www.mcgregor.com](http://www.mcgregor.com)